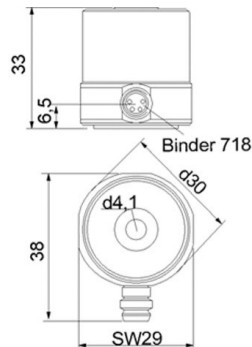


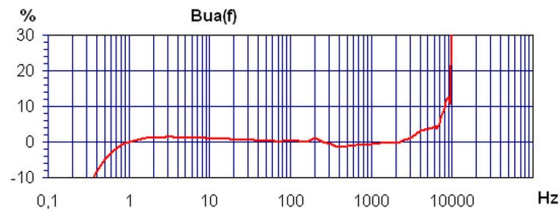
Properties

- Rugged industrial design
- IP code IP67
- Insulated base against ground loops
- Trough hole for easy attachment

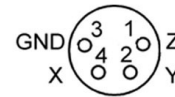


Piezo design	Shear design	
Output	IEPE	
Voltage sensitivity	100	mV/g
Sensitivity tolerance	5	%
Measurement range, pos./neg.	55	g
Destruction limit	4000	g
Transverse sensitivity	<5	%
Lower frequency limit (3 dB)	0,2	Hz
Upper frequency limit (3 dB)	10000	Hz
Lower frequency limit (10 %)	0,4	Hz
Upper frequency limit (10 %)	8000	Hz
Lower frequency limit (5 %)	0,6	Hz
Upper frequency limit (5 %)	7000	Hz
Resonant frequency	>15	kHz
Resonance amplitude	25	dB
Constant current supply	2 - 20	mA
Bias voltage at 4 mA	12 - 13,5	V
Output impedance	<250	Ω
Residual noise; wide band; RMS	<300 (0,2 - 20000 Hz)	μ g
Noise density 1 Hz	50	μ g/ \sqrt Hz
Noise density 10 Hz	10	μ g/ \sqrt Hz
Noise density 100 Hz	3	μ g/ \sqrt Hz
Noise density 1000 Hz	1	μ g/ \sqrt Hz
Operating temperature range	-20 - 90	$^{\circ}$ C
Temperature coefficient of voltage sensitivity	0,08	%/K
Temperature transient sensitivity	0,005	m/s ² /K
Weight without cable	115	g
Case material	Stainless steel	
Connector direction	radial	
Connector	Binder 718	
Mounting	\varnothing 4,1; screw included	
Isolated mounting	yes	
IP code	IP67	

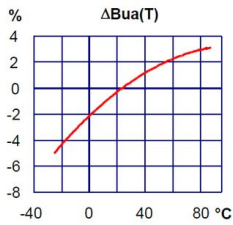
Typical Frequency Response



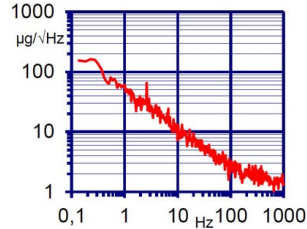
Contact Arrangement



Temperature Response



Noise Characteristics



Connection Accessories

- 088-B718G-PIG-5: IEPE cable; 5 m; Binder 718; 4 pins; female. to pig tail; 80 °C; Ø5
- 088-B718G-B711-5: IEPE cable; 5 m; Binder 718; 4 pins; female. auf Binder 711; male; 80 °C; Ø5
- 034-B711f-BNC: IEPE cable adapter Binder 711; 0,5 m; 4 pin; female. to 3 x BNC; male; 80 °C

Mounting Accessories

- 408: Rare earth magnetic base; M4; Ø30; 120 °C

Delivery version with accessories kit KS813B/01

- 088-B718G-B711-5: IEPE cable; 5 m; Binder 718; 4 pins; female. auf Binder 711; male; 80 °C; Ø5
- 034-B711f-BNC: IEPE cable adapter Binder 711; 0,5 m; 4 pin; female. to 3 x BNC; male; 80 °C
- 408: Rare earth magnetic base; M4; Ø30; 120 °C

Notice:

The standard delivery includes an individual data sheet.

This is a non-accredited measurement/calibration and consequently not covered by EA MLA.

On request, we offer a DIN EN ISO/IEC 17025:2018 accredited calibration of the measurand acceleration in the measuring range 0.1 m/s² to 200 m/s².



Metra Meß- und Frequenztechnik Radebeul GmbH & Co. KG

Meißner Str. 58a

01445 Radebeul

Tel. +49 (0)351 836 2191

Internet: www.MMF.de

Email: Info@MMF.de

Fax: +49 (0)351 836 2940

03.26

